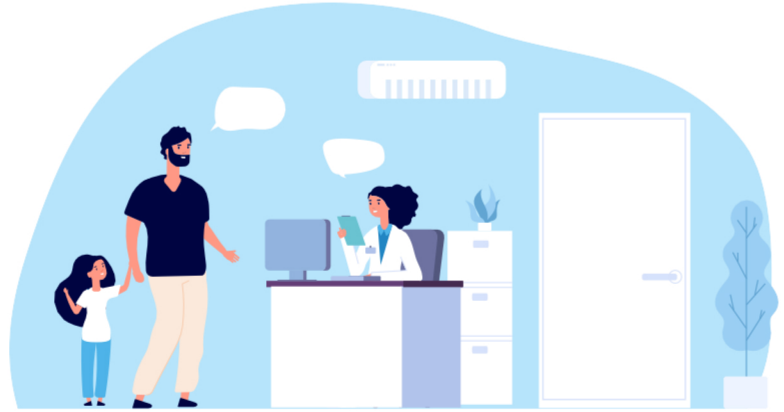


# HEALTHCARE CAREER PROGRAM

## Clinical Track



### Fall 2024 Start

New Student Orientation	9/12/2024
Enrollment & Payment Deadline	9/14/2024
Late Fee Past This Date <sup>1</sup>	9/14/2024
Module 1 Start Date	9/16/2024
Add / Drop / Schedule Changes Deadline <sup>2</sup>	9/21/2024
Late Fee Past This Date <sup>3</sup>	9/28/2024
Module 2 Start Date	10/21/2024
Fall Break / No Classes	11/25/2024 - 12/01/2024
Quarter End Date <sup>4</sup>	12/01/2024

New Student Orientation	1/02/2025
Payment Deadline	1/04/2025
Late Fee Past This Date <sup>1</sup>	1/04/2025
Module 1 Start Date	1/06/2025
Add / Drop / Schedule Changes Deadline <sup>2</sup>	1/11/2025
Late Fee Past This Date <sup>3</sup>	1/18/2025
MLK Day / No Classes	1/20/2025
Module 2 Start Date	1/26/2025
Module 3 Start Date	2/11/2025
Quarter End Date <sup>4</sup>	3/23/2025

New Student Orientation	3/27/2025
Payment Deadline	3/29/2025
Late Fee Past This Date <sup>1</sup>	3/29/2025
Module 1 Start Date	3/31/2025
Add / Drop / Schedule Changes Deadline <sup>2</sup>	4/05/2025
Late Fee Past This Date <sup>3</sup>	4/12/2025
Module 2 Start Date	5/05/2025
Memorial Day / No Classes	5/26/2025
Quarter End Date <sup>4</sup>	6/15/2025

New Student Orientation	6/19/2025
Payment Deadline	6/21/2025
Late Fee Past This Date <sup>1</sup>	6/21/2025
Module 1 Start Date	6/23/2025
Add / Drop / Schedule Changes Deadline <sup>2</sup>	6/28/2025
Independence Day / No Classes	7/04/2025
Late Fee Past This Date <sup>3</sup>	7/07/2025
Module 2 Start Date	7/28/2025
Labor Day / No Classes	9/01/2025
Program End Date	9/07/2025

#### September

Su	Mo	Tu	We	Th	Fr	Sa
1	2	3	4	5	6	7
8	9	10	11	12	13	14
15	16	17	18	19	20	21
22	23	24	25	26	27	28
29	30					

#### December

Su	Mo	Tu	We	Th	Fr	Sa
1	2	3	4	5	6	7
8	9	10	11	12	13	14
15	16	17	18	19	20	21
22	23	24	25	26	27	28
29	30	31				

#### March

Su	Mo	Tu	We	Th	Fr	Sa
						1
2	3	4	5	6	7	8
9	10	11	12	13	14	15
16	17	18	19	20	21	22
23	24	25	26	27	28	29
30	31					

#### June

Su	Mo	Tu	We	Th	Fr	Sa
1	2	3	4	5	6	7
8	9	10	11	12	13	14
15	16	17	18	19	20	21
22	23	24	25	26	27	28
29	30					

#### September

Su	Mo	Tu	We	Th	Fr	Sa
	1	2	3	4	5	6
7	8	9	10	11	12	13
14	15	16	17	18	19	20
21	22	23	24	25	26	27
28	29	30				

#### October

Su	Mo	Tu	We	Th	Fr	Sa
		1	2	3	4	5
6	7	8	9	10	11	12
13	14	15	16	17	18	19
20	21	22	23	24	25	26
27	28	29	30	31		

#### January

Su	Mo	Tu	We	Th	Fr	Sa
				1	2	3
4	5	6	7	8	9	10
11	12	13	14	15	16	17
18	19	20	21	22	23	24
25	26	27	28	29	30	31

#### April

Su	Mo	Tu	We	Th	Fr	Sa
		1	2	3	4	5
6	7	8	9	10	11	12
13	14	15	16	17	18	19
20	21	22	23	24	25	26
27	28	29	30			

#### July

Su	Mo	Tu	We	Th	Fr	Sa
		1	2	3	4	5
6	7	8	9	10	11	12
13	14	15	16	17	18	19
20	21	22	23	24	25	26
27	28	29	30	31		

#### November

Su	Mo	Tu	We	Th	Fr	Sa
						1
2	3	4	5	6	7	8
9	10	11	12	13	14	15
16	17	18	19	20	21	22
23	24	25	26	27	28	29
30						

#### February

Su	Mo	Tu	We	Th	Fr	Sa
						1
2	3	4	5	6	7	8
9	10	11	12	13	14	15
16	17	18	19	20	21	22
23	24	25	26	27	28	

#### May

Su	Mo	Tu	We	Th	Fr	Sa
					1	2
3	4	5	6	7	8	9
10	11	12	13	14	15	16
17	18	19	20	21	22	23
24	25	26	27	28	29	30
31						

#### August

Su	Mo	Tu	We	Th	Fr	Sa
						1
2	3	4	5	6	7	8
9	10	11	12	13	14	15
16	17	18	19	20	21	22
23	24	25	26	27	28	29
30	31					

<sup>1</sup> Payments made past the Payment Deadline are subject to a \$100 Late Fee.  
<sup>2</sup> Class schedule is not guaranteed if tuition, course materials and supply fees are not fully paid by this date. All campus/schedule changes are subject to availability, and a \$25 change fee. Campus/schedule change requests must be submitted by this date for students to be eligible for a campus/schedule change:  
 1. Tuition, course materials, and supply fees must be fully paid.  
 2. Must have attendance in their original schedule.  
<sup>3</sup> Payments made past the Payment Deadline are subject to a \$300 Late Fee.  
<sup>4</sup> Refer to your syllabus for last day of class excluding makeup sessions.